



**15,000 Sq. Ft. Standalone Building**  
409 Alana Lane, The Woodlands, 77386



- Standalone building in **Hanna Business Park**
- Lease Rate: \$.75 / Sq. Ft. / month NNN. Nets are \$.25 / Sq. Ft. / month.
- Completely Air Conditioned
- Over 5,000 sq. ft. Office Space / 10,000 sq. ft. of Warehouse
- One dock-high loading dock & one grade level loading dock
- Large reception / display area, kitchen, conference room, ADA men's & women's restrooms
- Beautifully landscaped, it is located facing Alana Lane, which is a quiet street in the City of Oak Ridge North.



**CONTACT INFORMATION**

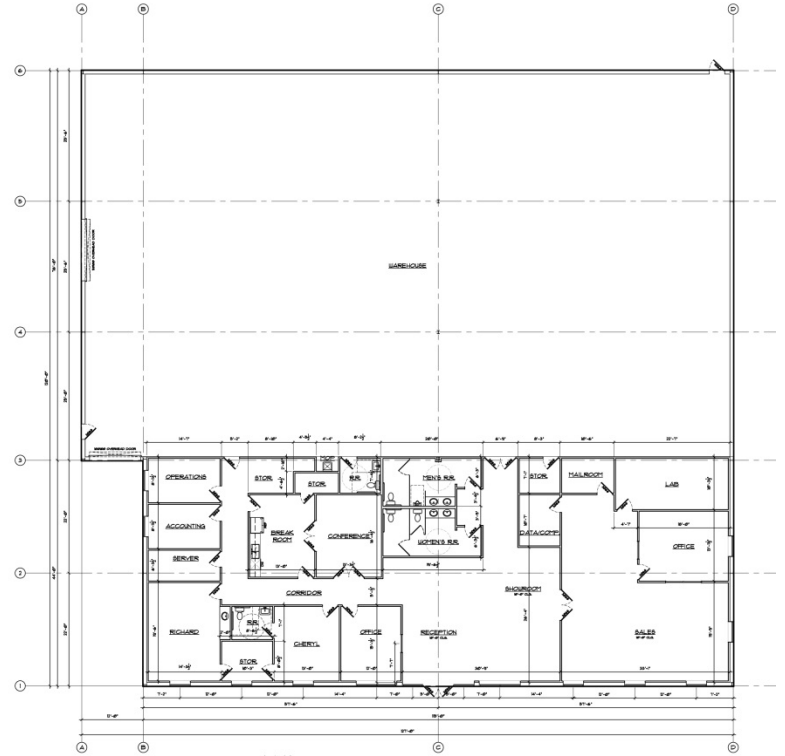
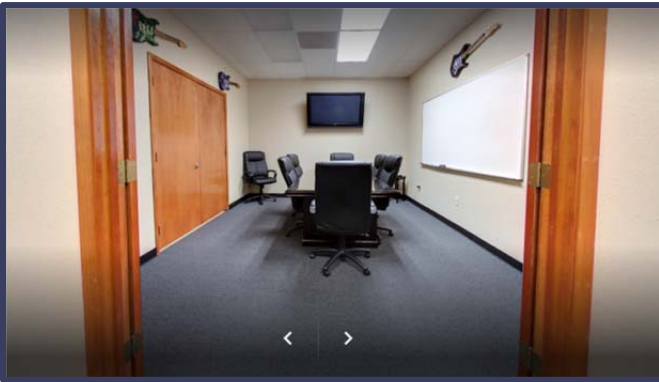
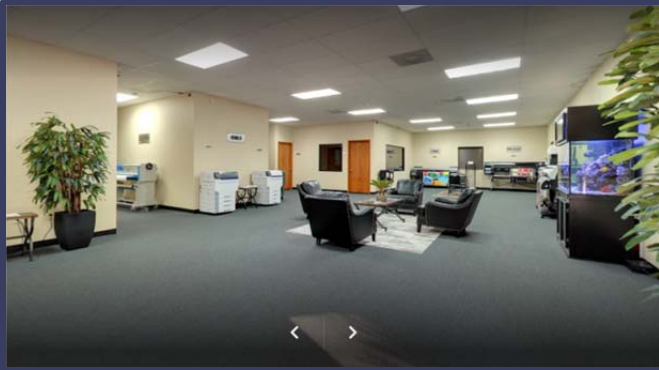
**John A. Tatum, Jr. Broker / Owner**  
Greater Houston Commercial Real Estate

8 Thimbleberry Court  
The Woodlands, Texas 77380  
jat@ghrs.com  
hannabusinesspark.com  
Phone: 281.367.5549  
Fax: 281.602.7750

# HANNA

BUSINESS PARK

## 15,000 Sq. Ft. Standalone Building



NOT FOR REG  
 APPROVAL, PE  
 OR CONTRACTOR



Grade Level  
 Door



Dock-High Door

### CONTACT INFORMATION

**John A. Tatum, Jr. Broker / Owner**  
 Greater Houston Commercial Real Estate

8 Thimbleberry Court  
 The Woodlands, Texas 77380  
 jat@ghrs.com  
 hannabusinesspark.com  
 Phone: 281.367.5549  
 Fax: 281.602.7750

**Hanna Business Park** is located on a 6-acre tract near the corner of Robinson Road and Hanna Road in a warehouse area setting. It is an exceptionally flexible facility featuring a metallic building that provides 98,000 square feet of enclosed retail/office/warehouse space.