

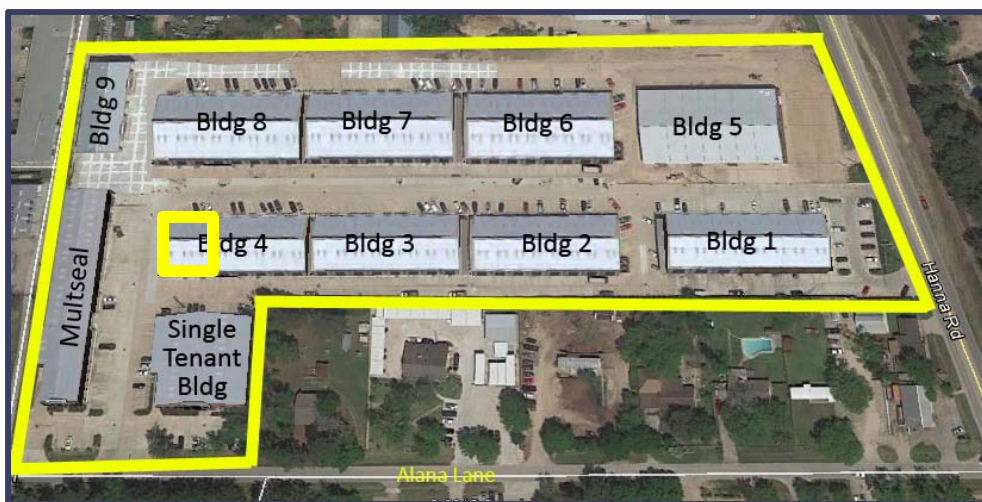


## 6,000 Sq. Ft. Space

26797 Hanna Road Building 4, Ste 6 - 8, The Woodlands, 77385



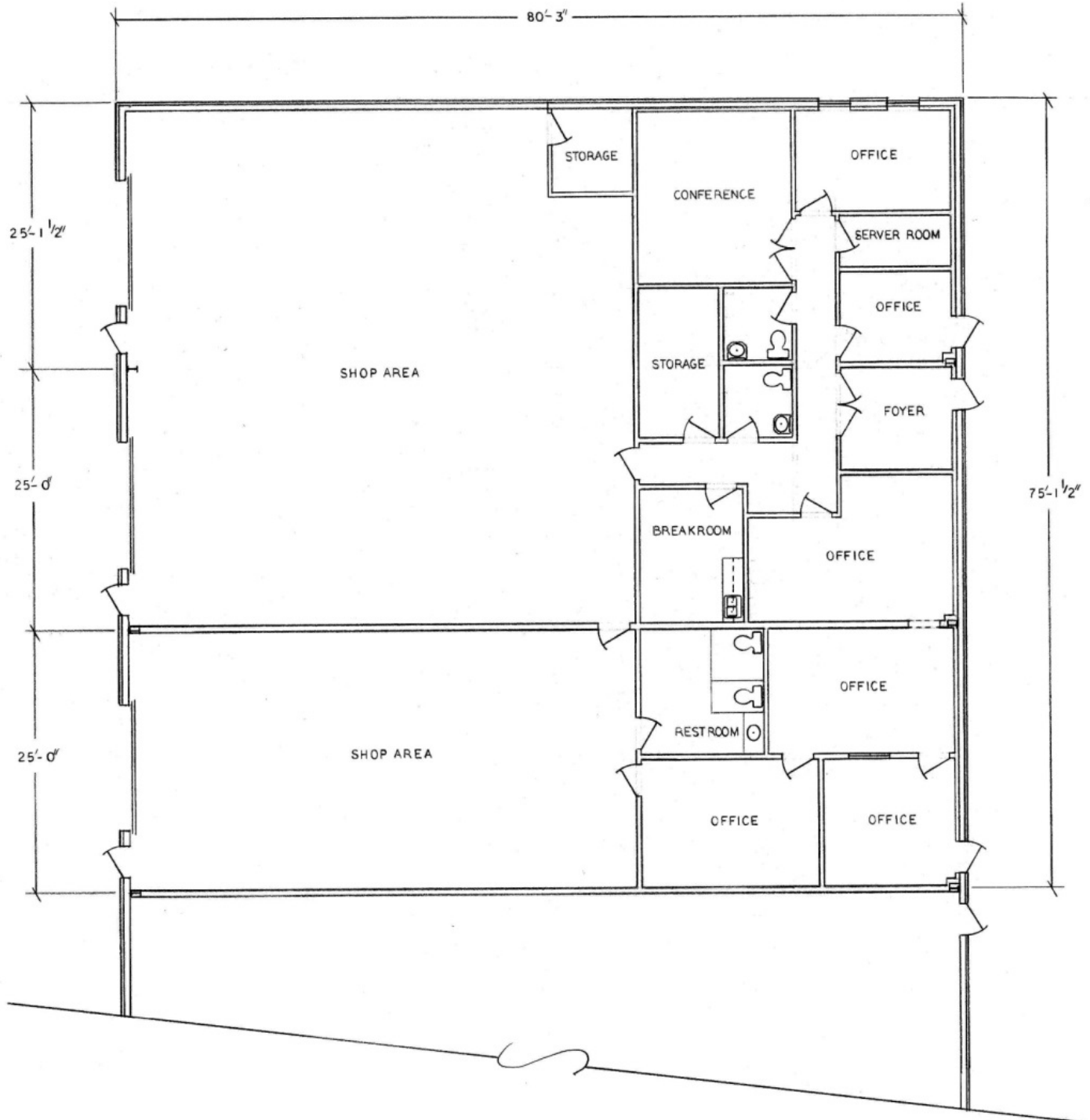
- Located in **Hanna Business Park, Building 4 Suites 6 - 8**
- 2,500 sq. ft. Office Space / 3,500 sq. ft. of Warehouse
- Contains 6 offices, a conference room, a break room, server room, storage and 3 bathrooms.
- 3 grade level roll-up doors
- Available May 2019
- Lease Rate: \$.75 / Sq. Ft. / Month NNN



## CONTACT INFORMATION

**John A. Tatum, Jr. Broker / Owner**  
Greater Houston Commercial Real Estate

8 Thimbleberry Court  
The Woodlands, Texas 77380  
jat@ghrs.com  
hannabusinesspark.com  
Phone: 281.367.5549  
Fax: 281.602.7750



**Hanna Business Park** is located on a 11-acre tract near the corner of Robinson Road and Hanna Road in a warehouse area setting. It is an exceptionally flexible facility featuring a metallic building that provides 203,000 square feet of enclosed retail/office/warehouse space.