



HANNA BUSINESS PARK, SECTION I

26797 Hanna Road, City of Oak Ridge North, Texas 77385

RATE FOR SECTION I: \$.75 / SQ. FT. NNN

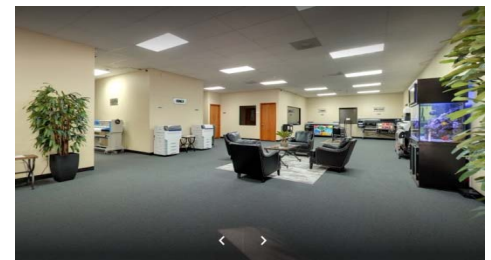
Hanna Business Park is located on a 6-acre tract near the corner of Robinson Road and Hanna Road in a warehouse area setting. It is a new and exceptionally flexible facility featuring a metallic building that provides 98,000 square feet of enclosed retail/office/warehouse space.

AVAILABLE SPACES IN SECTION I:

Space 1 Available: Storefront Retail Space - 1,400 Sq. Ft. Retail space - This space is located in Building 1, is completely air conditioned and provides a reception, multiple offices, break room and restroom.

Space 2 Available: 4,000 Sq. Ft. Office / Warehouse - This space is located in Building 1, provides a reception, three offices, restroom and warehouse.

Space 3 Available: 15,000 Sq Ft Office / Warehouse Standalone Building - This standalone building is 100% air conditioned. This building is over 5,000 sq. ft. of office Space and 10,000 sq. ft. of warehouse. It provides a very large reception / display area, kitchen, conference room, ADA men's & women's restrooms. Beautifully landscaped, it is located facing Alana Lane, which is a quiet street in the City of Oak Ridge North.



CONTACT INFORMATION

John A. Tatum, Jr. Broker / Owner
Katheryn Roberts, Sales Agent
Greater Houston Commercial Real Estate

8 Thimbleberry Court
The Woodlands, Texas 77380
jat@ghrs.com
hannabusinesspark.com
Phone: 281.367.5549 / 832.640.3960
Fax: 281.602.7750